

The CMS Tumbler

January
2022

The monthly newsletter of the Cascade Mineralogical Society, Inc., Kent, Washington

Next Meeting:
January 13, 2022
7:00 p.m.

Connect with us!

Website: <https://www.cascademineralogicalsociety.org>
Club Facebook: <https://www.facebook.com/CasMinSoc/>
Show Facebook: <https://www.facebook.com/cascadegemandmineralshow>
Instagram: <https://www.instagram.com/cascadegemandmineralshow/>

Zoom Meeting Again (see page 7 for the reason)

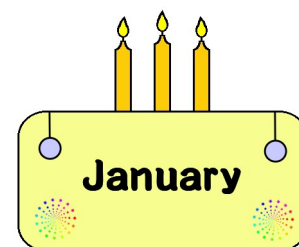
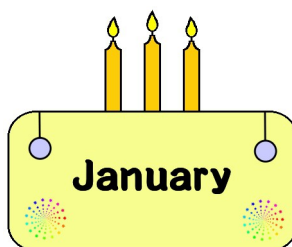
Our club is 73 years old on
January 13.
The club had it's first meeting
in 1949 as the Sebac
Mineralogical Society, later
becoming the Boeing
Employees' Mineralogical
Society, and after breaking
from Boeing renaming
ourselves the Cascade
Mineralogical Society.

Table of Contents

Calendar.....	3
Cartoon.....	3
Board Minutes.....	5
General Minutes.....	5
From the Top of the Rock Pile.....	6
Website Help.....	7
General Club News.....	7
Ice Age Floods National Geographic Trail.....	8
Young Tumblers News.....	11
Young Richard's Almanac.....	12

This month remember
to wish a
Happy Birthday to
Sarah King on January 1
Jennifer Watson on January 7
Roger Danneman on January 8
Dan Bariault on January 9
Jonathan Fraser on January 10
John Haworth on January 13
Jeremy Bort on January 17
Ann McMurtray on January 19
Becky Trepanier on January 19
Era Pogosova-Agadjanyan on January 20
Lily Balcom on January 25
Rowan Miller on January 26
Shirley Duncan on January 29
Ruby Wasley on January 29
and also remember
to wish a

Happy Anniversary to
Michael & Katy Stevenson on January 9
Catherine & Brett Petty on January 18 (20 years)
Jamie Pearson & Megan Herndon on January 24 (14 years)



Except where otherwise noted, material from The Tumbler may be reprinted for non-commercial purposes, provided that the author(s) and source are acknowledged.

For commercial use, the author(s) must be contacted for permission; if no contact information is given, contact them via the editor.

Tips, suggestions, recipes and experiments printed in this newsletter are the experiences and/or opinions of the individuals submitting them. We are not responsible for their authenticity, safety, or reliability. Caution and safety should always be practiced when trying out any new idea.

CMS Club Address
25838 W LK Wilderness Dr. SE.
Maple Valley, WA. 98038

Keith Alan Morgan, Editor
3802 W Tapps Dr. E
Lake Tapps, WA 98391

Postal, or Email, Exchange
Bulletins are welcome.
Email preferred.
greenrockdraggin@yahoo.com

2022 Elected Officers

<i>Title</i>	<i>Name</i>	<i>Phone</i>	<i>E-mail</i>
President	Kat Koch	425-765-5408	president@cascademineralogicalsociety.org
Vice President	Linda Jorza	206-478-1642	ljorza@gmail.com
Treasurer	Travis King		
Secretary	Pete Williams	425-228-5063	petewill02@gmail.com
Director 1	Roger Danneman	425-228-8781	Roger.Danneman@gmail.com
Director 2	Kathy & Gerry Hertz		
Director 3	Richard Russell	253-736-3693	richru1@yahoo.com
Director 4	Scott Harris	425-306-1570	cubfan01@gmail.com
Past President			
Show Chairman	Kat Koch	425-765-5408	president@cascademineralogicalsociety.org
Federation Representative	Michael Blanton	425-271-8757	mblanton41@hotmail.com
Federation Representative	Kat Koch	425-765-5408	president@cascademineralogicalsociety.org
Mineral Council	Diana Horsfall	206-818-9507	dianahorsfall@comcast.net
Mineral Council			

2022 Show Committee Chairs

Cascade Show	Kat Koch	425-765-5408	president@cascademineralogicalsociety.org
Cascade Show Co-Chair	James Starke		
Cascade Show Treasurer	Pete Williams	425-228-5063	petewill02@gmail.com
Cascade Show Silent Auction	Michael Blanton	425-271-8757	mblanton41@hotmail.com
Cascade Show Raffle Donations	Michael Blanton	425-271-8757	mblanton41@hotmail.com
Cascade Show Demonstrators	Richard Russell	253-736-3693	richru1@yahoo.com

2022 Committee Chairs

Club Historian			
Donations	Kat Koch	425-765-5408	president@cascademineralogicalsociety.org
Field Trip	Roger Danneman	425-228-8781	Roger.Danneman@gmail.com
Health & Welfare	Bev Williams	425-228-5063	britbev1957@outlook.com
Library			
Meeting Programs			
Membership	Mark Hohn	253-332-3736	showchair@cascademineralogicalsociety.org
Newsletter - Tumbler Editor	Keith Alan Morgan	253-316-9935	greenrockdraggin@yahoo.com
Open Shop	Instructors		
Public Relations	Kat Koch	425-765-5408	president@cascademineralogicalsociety.org
Refreshment	Angie Bayer	253-631-3840	angiemc61@msn.net
Raffle/Display	Roger Pullen	206-387-3214	None
Shop Operations			
Show & Tell	Michael Blanton	425-271-8757	mblanton41@hotmail.com
Social Media	Kat Koch	425-765-5408	president@cascademineralogicalsociety.org
Webmaster	Mark Hohn	253-332-3736	showchair@cascademineralogicalsociety.org

2022 CMS Dues are \$25 per year per family

Pay online, by mail, or at our meetings.

Mailing Address: Charles Benedict, 25838 W Lk Wilderness Dr SE, Maple Valley WA 98038

You can pay your dues via credit card!! We now accept all cards through our website or at the meeting.

You can renew your membership or enroll as a new member and pay your dues all in one shot online. You will find it under the "Membership" tab on our website. <http://www.cascademineralogicalsociety.org>

The object of the Society shall be to stimulate interest in the study of the earth sciences, lapidary arts and related subjects.

This Society is affiliated with the American Federation of Mineralogical Societies; the Northwest Federation of Mineralogical Societies; and the Washington State Mineral Council.

Every member of the club should be receiving a copy of the Northwest Newsletter. If you are not receiving a copy contact Mike Blanton in person or by telephone at (425) 271 -8757 or by computer at mblanton41@hotmail.com

To get information to the Tumbler via the Internet send it to greenrockdraggin@yahoo.com Please put Tumbler and subject in the Subject Line. The deadline is the 20th of each month.

Sun	Mon	Tue	Wed	Thur	Fri	Sat
2021	Hope the new year is happy and better for you all!				2022	1
2	3	4	5	6	7	8
9	10 Board Meeting 7:00 pm	11	12	13 General Meeting 7:00 pm	14	15
16	17	18	19	20	21	22
23	24	25	26	27	28	29
30	31					

CMS Show Committee Meeting:.....Monday, January 10.....6:30 pm to 7:00 pm

CMS Board Meeting:.....Monday, January 10.....7:00 pm to 8:00 pm

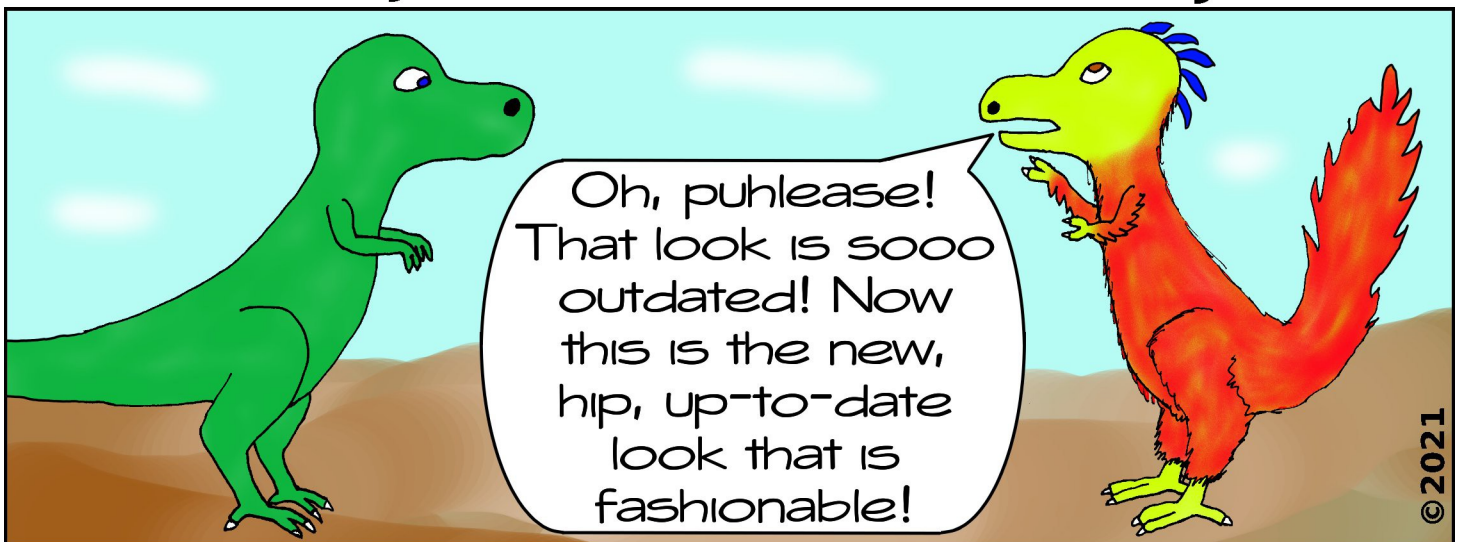
CMS General Meeting:.....2nd Thursday, January 13.....7:00 pm to 9:00 pm

Lapidary Class Hours:.....By appointment, call to set a time & day for your lesson (425) 226-3154

Lapidary Shop Hours:.....Most Tuesdays..... 2:00 pm to 5:00 p, call ahead (425) 226-3154

Lapidary Shop Hours:.....3rd Saturday..... by appointment only (call a few days ahead to set time)

Fashionably Prehistoric ***by KAM***



The Tumbler has received One-Time Rights to publish this cartoon

Our Club is a Member of these Federations and Associations

AFMS: The AFMS governs our Northwest Federation. <http://amfed.org/index.html>

The bulletins are published quarterly. You can find the news bulletins at <http://amfed.org/news/default.htm>



NFMS: The Northwest Federation is our home federation. To keep up on the goings on in our own backyard. <http://northwestfederation.org/>

The link for the news bulletins is <http://northwestfederation.org/Newsletters.asp>



ALAA: The American Lands Access Association, Inc. represents the rockhounding interests of 325 gem & mineral clubs/societies in 47 States and the District of Columbia.

The purpose of the association is to promote and ensure the rights of amateur fossil and mineral collecting, recreational prospecting and mining. The use of public and private lands for educational and recreational purposes. They also carry the voice of all amateur collectors and hobbyists to our elected officials, government regulators and public land managers. <http://amlands.org>



The front page also has a lot of current news, rockhounding restrictions or lack of, etc. <http://amlands.org>

ALAA also publishes a quarterly newsletter. To keep up on the news and lobby efforts on our behalf check out <http://amlands.org/>

Washington State Mineral Council: The Washington State Mineral Council is dedicated to the location and conservation of rock and mineral sites of interest to the rockhounds of Washington state. <https://mineralcouncil.wordpress.com/>

You can find a database of local rock and gems shows and field trips. It's a great resource if you want to plan on outing.



Also check out "Misc. News" for all the latest updates on collecting sites around Washington.

<https://mineralcouncil.wordpress.com/news-updates/>

When the weather is good they have regular monthly field trips. So take advantage of these great outdoor rockhounding adventures! The field trip details are under "Field Trips" on the left side of the site. Check out the link for additional details for time and place to meet and the field trip leader.

You can find all this information and a whole lot more about what is happening in our state at <https://mineralcouncil.wordpress.com/>

Rockhounding Code of Ethics

I will respect both private and public property and will do no collecting on privately owned land without permission from the owner.

I will keep informed on all laws, regulations or rules governing collecting on public lands and will observe them.

I will, to the best of my ability, ascertain the boundary lines of property on which I plan to collect.

I will use no firearms or blasting material in collecting areas.

I will cause no willful damage to property of any kind such as fences, signs, buildings, etc.

I will leave all gates as found.

I will build fires only in designated or safe places and will be certain they are completely extinguished before leaving the area.

I will discard no burning material - matches, cigarettes, etc.

I will fill all excavation holes which may be dangerous to livestock.

I will not contaminate wells, creeks, or other water supplies.

I will cause no willful damage to collecting material and will take home only what I can reasonably use.

I will practice conservation and undertake to utilize fully and well the materials I have collected and will recycle my surplus for the pleasure and benefit of others.

I will support the rockhound project H.E.L.P. (Help Eliminate Litter Please) and will leave all collecting areas devoid of litter, regardless of how found.

I will cooperate with field-trip leaders and those in designated authority in all collecting areas.

I will report to my club or federation officers, Bureau of Land Management or other authorities, any deposit of petrified wood or other materials on public lands which should be protected for the enjoyment of future generations for public educational and scientific purposes.

I will appreciate and protect our heritage of natural resources.

I will observe the "Golden Rule", will use Good Outdoor Manners and will at all times conduct myself in a manner which will add to the stature and Public Image of Rockhounds everywhere.

from the AFMS website

Scientists measuring muons (a type of sub-atomic particle) passing through volcanoes have had some success in predicting eruptions by a few hours. Obviously this technique is still in the testing stage, so time will tell how accurate and dependable it will be.

CMS Board Meeting Minutes December 6, 2021

by Pete Williams, 2021 Secretary

*Attendance:**President Kat Koch**Secretary Pete Williams**Director Roger Danneman**Federation Mike Blanton**James Starke, Travis King, Linda Jorza, Gary and Kathy Hertzell**Treasurer Charles Benedict**Mineral Council Diana Horsfall*

Meeting called to order 7:07

Kat announced that long time club member Fred Thompson passed away and that Mark Hohn left the hospital, but is still recovering. Other information passed on was that the club now has 99 family memberships; the credit card link on the website was down temporarily; and we now switched to using Wave software for the club financials.

Green River College confirmed that our club show will be held there on August 21-22, 2022 with setup on August 20. Fees will be the same as 2019. As of now, only vaccinated people will be allowed into the show, including the vendors. The College will provide people to check vaccination status at the door at a cost to us of \$25/hour. This could change next year depending on state rules.

The January program will be videos on how salt domes are formed and salt domes in Iran. Charley looked into the club's liability insurance. The cost went up considerably. The policy appears to cover our needs, but the agent was not clear. Kat will check with her agent to get more information and possibly a lower cost.

Meeting adjourned at 7:49

CMS General Meeting/Christmas Party Minutes December 12, 2021 by Pete Williams, 2021 Secretary

We had another enjoyable Christmas party with about 35 attendees. The auction was a success with 25 winner bidders from 53 lots. Election of officers was held with results as noted below. These are 2 year positions unless otherwise noted.

President – Kat Koch

Vice President – Linda Jorza

Treasurer – Travis King

Secretary – Pete Williams

Show Chair – James Starke

Director 1 – Roger Danneman (Field Trips)

Director 2 – Kathy & Garry Hertzel (1 year fill-in position)

Director 3 – Rich Russell (1 year left - elect 2023)

Director 4 – Scott Harris (Programs) (1 year - elect 2023)

Appointed Positions

Mineral Council – Diana Horsfall

Federation – Mike Blanton, Kat Koch



Board Members (both pics)



Dishing up to eat (above) Some auction items (right)



More auction items (above left)



The auction with screaming deals! (above right)

From the Top of the Rock Pile... by Kat Koch, 2022 President

Our holiday party was a huge success. We had 43 members and guests attending to celebrate the holidays together. It was so good to see everyone!

Our auction proceeds were the largest we have ever had. \$1,077 less \$33 Rock Bucks = cash to the treasury of \$1,047. So that you know where this money goes, a major portion of this will cover our liability insurance for the coming year. The premium went sky-high for 2022. The policy is out for bid to ensure we get the best coverage possible for what the club can afford.

One reason for the tremendous success of the auction was due to the fantastic donations. Rich Russell (faceted citrine in sterling silver pendant setting) and Malcolm Wheeler (matching faceted white Topaz earrings and pendant stones) donated faceted stones that they had cut themselves. In addition, there were so many other outstanding donations from John, Dave, Terri, Roger D, Roger P, Kat, Linda, Mike, and many others. I am so sorry if I have omitted your name. I extend a huge "Thank You!" to everyone.

It was also good seeing some of our members we haven't seen in a while: Dick Morgan, Keith Morgan, Dan and Sue Rieger, to mention a few. We also had a couple of new family members sign up.

I also want to thank Angie, Brian, and Bev for setting up the potluck table with food and decorations, then cleaning everything up.

Our members are fantastic — everyone pitched-in in so many ways without asking.

Our next meeting is on January 13th, Thursday @ 7 pm, via Zoom. Check the website for details. You should receive an email after January 1st with the Zoom meeting link. You can join the meeting via your laptop, desktop, tablet, or smartphone.

If you are working on a lapidary project (or tumbling) and need help, we are all here to help each other. If you have a question or need help, reach out to someone on the board or another member. Also, if you need grit, the club has some for our CMS members at a great price. Contact Diana Horsfall (she is Bob Pattie's daughter) and she will arrange for you to get some. Her contact info is on page 2 of the Tumbler each month.

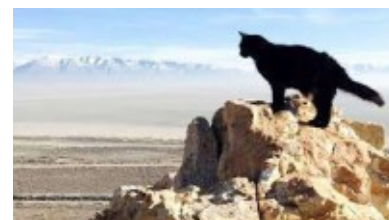
Our lapidary shop is still at the same location. The shop is presently winterized for the next few months. As soon as the weather permits, you can make reservations to use it. Diana will handle making reservations to use the shop. Her contact info is on page 2 of the Tumbler each month.

Don't forget to renew your membership if you have not already done so. It can all be done through our website or at our regular meetings.

We have both new and old faces on the board for 2022. I hope for some fresh ideas and input from the board and our members. Always feel free to email me from the contact page on our website with your thoughts or feedback. My email address is also on page 2 of the Tumbler each month.

We continue to get new members every week. Our membership is now over 100 families. So if you are a new member, please be sure to come up and introduce yourselves.

Wear a mask, be safe and stay healthy as we all want to see each other throughout 2022.



Looking For Someone That Knows WordPress

Mark Hohn, our webmaster and he also took care of our membership database, is seriously ill. He is temporarily resigning from his positions while working on getting better.

I take care of updating the website monthly and can take over the membership database and send the Tumbler each month. Roger takes care of his portion on the field trips. The club needs someone to oversee the website and make any changes necessary for the next 8 to 12 months. There are no planned changes, so it should be an easy job.

Once Mark is better and feels like he can return to our club, he plans to take back the website.

If you know WordPress and are interested in handling this position until Mark gets better, please get in touch with me, Kat Koch, at president@cascademineralogicalsociety.org



General Meeting – January 13th – Thursday @ 7 pm

Our January 13th meeting will be a Zoom meeting at 7 pm.

We have to switch to a Zoom meeting because of the King County Directive for Covid/Omicron. All business, non-profits, and public meeting attendees must show proof of vaccination or a negative PCR test within 72 hours of the meeting. Unfortunately, the Board doesn't know how to enforce this requirement.

This was a last minute change and the topic of the meeting hasn't been planned yet.

You can check the website later for the topic.

Please check your email after the New Year (Jan 1st) for the link to the meeting.



New for Members Only – New Texting Service

We are busy and often forget that CMS has an upcoming meeting or event.

We have a texting service to remind members of CMS meetings and events.

To register for this reminder service, send a text to (888) 731-1000. In the body of the text, type the word rocks. Or scan the QR code with your smartphone, select "Send SMS," it will auto-insert the word rocks. Now hit send.

No matter how you register, you should receive a confirmation that you are registered. If you do not receive a confirmation, try to register again.

If you continue to have trouble registering, please send a message via our website's "Contact Us!" tab.

The stipulation is you must be a club member. You can opt out of this service anytime by responding with STOP.



A Huge Thank You From Mike Blanton!

We had a great Holiday Party!

I want to thank everyone who pitched in and helped set up, take down, and clean up.

I appreciated it so much as it was tough for me to do everything that I usually do as my back and legs were very bad this year.

Again a very sincere thank you!



Snow on a handmade rock arch.

The Tree's Prayer

(Excerpts from the poem by George MacDonald)
Public Domain

Alas, 'tis cold and dark!
The wind all night hath sung a wintry tune!
Hail from black clouds that swallowed up the moon
Beat, beat against my bark.

Oh! why delays the spring?
Not yet the sap moves in my frozen veins;
Through all my stiffened roots creep numbing pains,
That I can hardly cling.
See, see the heartless dawn,
With naked, chilly arms latticed across!

Another weary day of moaning loss
On the thin-shadowed lawn!
But icy winter's past;
Yea, climbing suns persuade the relenting wind:
I will endure with steadfast, patient mind;
My leaves will come at last!



Editor's Note: Page 2 Information by Keith Alan Morgan

Well, it's that time of year where I change the names on the officers and committee chairs list on page 2. Please check the list! If your name is there, but shouldn't be... let me know! If your name is not there, but should be... let me know! I found I was missing a surprising amount of contact info for new officers, so please send me the information. The best way to get information to me is by email greenrockdraggin@yahoo.com

Scam Emails by Kat Koch

Scam emails are going to almost everyone in our Tumbler contact list. If you should get one asking for gift card purchases or any type of bill to be paid - it is a scam. You can always call me if you need to verify an email. 425-765-5408

The Ice Age Floods National Geologic Trail by Kat Koch, Cascade Mineralogical Society

The Ice Age Floods National Geologic Trail is a network of connecting natural sites and facilities that provide interpretation of the geological consequences of the Glacial Lake Missoula floods of the last glacial period that occurred about 18,000 to 15,000 years ago. It includes sites in Washington, Oregon, Idaho, and Montana. It was designated the first National Geologic Trail in the United States in 2009.



History

The National Park Service commissioned an environmental assessment, which concluded the creation of a "National Geologic Trail. It designated the Floods pathways managed by the National Park Service. An Interagency Technical Committee represented the federal, tribal, and state agencies and a Trail Advisory Committee to assist the Trail Manager and staff" was the preferred option. Subsequently, the Omnibus Public Land Management Act of 2009 authorized establishing the Ice Age Floods National Geologic Trail in parts of Montana, Idaho, Washington, and Oregon and established NPS administration of the trail.

As of 2014, the trail was 1,197.7 miles long. The path separates into two just north of Devil's Lake State Park at one point. The western portion of the trail, 92 miles in length, is referred to as the Western Bifurcation. The Western Bifurcation consists mainly of proposed trail sections (though several miles of the established trail exist). The Western Bifurcation joins a 75-mile eastern counterpart near the town of Coloma. Though the east portion of the trail is more developed than its western counterpart, both are officially recognized parts of the Ice Age Trail. As of 2008, the trail consisted of 467 miles of traditional hiking paths, 103.2 miles of multi-use trails, and 529.3 miles of connecting roads and sidewalks. As of October 2020, 675 miles were completed, with over 400 miles connecting routes (usually roads).

Geologic Basis For The Trail

At the end of the last Ice Age (the Wisconsin Ice Age), a branch of the Cordilleran Ice Sheet moved out of Canada into the Idaho panhandle region. Here it formed a 2,000 ft high ice dam that blocked the mouth of the Clark Fork River, creating Glacial Lake Missoula, which impounded greater than 2,000 km³ (480 cubic mi) of water. The lake extended up the valleys eastward for over 200 miles. The periodic rupturing of the ice dam resulted in the Missoula Floods – cataclysmic floods that swept across Idaho and Eastern Washington and then down the Columbia River Gorge approximately 40 times in 2,000 years. The flood front swept in a wave across Idaho and Washington at speeds approaching 62 mph, and Glacial Lake Missoula drained in periods as short as two days.

The Columbia River channel downstream was blocked by the Okanogan lobe of the Cordilleran, impounding water in Glacial Lake Columbia. As a result, the floods could not continue down the Columbia River and were forced instead to flood over the highlands of Eastern Washington, vastly transforming the landscape by forming the Grand Coulee, Moses Coulee, the Channeled Scablands, Dry Falls, Palouse Falls, and many similar features. The cumulative effect of the floods was to excavate 210 km³ (50 cubic mi) of loess, sediment, and basalt from the channeled scablands of eastern Washington and transport it downstream. For 2,000 to 2,500 years, the repetition of ice dam failure and flood was repeated 40-60 times, leaving a lasting mark on the landscape.

Illustration of the glacial flows leading to the formation of several parts of the trail

Many characteristic features illustrate the effect of these ice dams and the power of the resulting floods:

Large portions of the scabland region of Eastern Washington were stripped bare of topsoil and left as the base basalt rock.

The landscape is extensively eroded, with deep sheer-walled canyons in the Grand Coulee, Moses Coulee, the Wallula Gap, and the Columbia River Gorge.

There are giant ripple marks 30 ft high and gravel bars over 4 mi long and 300 ft tall, which would have required extreme currents to form.

There are 200 short tons (440,925 pounds) erratic boulders, which originated in Canada and Montana, are found well up valleys. Such as the Willamette River valley far south of any evidence of glacial activity; these boulders were ice-rafted in and deposited as the ice was stranded & melted in backwaters of temporary lakes.

The scablands formed include deep kolks created by local turbulence, which plucked basalt boulders out and excavated pits in the middle of relatively smooth plains.

Backwaters of temporary lakes formed during the floods show extensive & periodic deposits of silt and sand.

Trail Features

From the trail near Glacial Lake Missoula, there is a high-water marker at 4,200 ft. The trail comprises routes throughout the Pacific Northwest, where the Ice Age Floods left a lasting impact. Regions and featured sites include:

The floodwaters were initially impounded in the Glacial Lake Missoula region of Montana.

The Lake Coeur d'Alene area and the Clark Fork River of Idaho periodically flowed through the floodwaters.

Farragut State Park

Lake Pend Oreille

The Waterville Plateau in Washington state is where the Okanagon lobe impounded Glacial Lake Columbia and diverted the flow through Moses Coulee, Grand Coulee, and Dry Falls.

The Withrow Moraine and Jameson Lake Drumlin Field, Douglas County, WA
Boulder Park, WA

Sims Corner, Eskers and Kames, Douglas County, WA

Erosion features from the floods such as the Channeled Scablands, Drumheller Channels, Crab Creek, Corfu Slide, and Palouse Falls in Washington Sun Lakes-Dry Falls State Park is surrounded by one of Washington's most striking and historically significant landscapes. Dry Falls is a geological wonder of North America. Carved by Ice Age floods



Glacial Lake Missoula high water mark, 4,200 ft.

more than 13,000 years ago, the former waterfall was once four times the size of Niagara Falls. Today, the 400-foot-high, 3.5-mile-wide cliff overlooks a big sky and a landscape of deep gorges and dark, reflective lakes.

Ginkgo Petrified Forest State Park, WA

Lyons Ferry State Park, WA

Steamboat Rock State Park, Banks Lake, Grand Coulee, WA

Temporary lakes such as Lake Lewis in Washington as well as Lake Condon and Lake Allison in Oregon and the evidence for these temporary lakes as seen in the ice-rafted erratics and the deposits of the Touchet Formation.

Yakima Sportsman State Park

Bellevue Erratic is a 90-ton rock stranded in the Willamette Valley, Oregon, after being rafted onboard an iceberg during an ice age flood event.

Erosion features include the Wallula Gap through the Horse Heaven Hills in southern Washington, the Columbia River Gorge on the border between Oregon and Washington, and Alameda Ridge in Portland.

Columbia Hills State Park

Beacon Rock State Park

Multnomah Falls

Portland Women's Forum State Scenic Viewpoint

Vista House Museum, Crown Point in Multnomah County, Oregon

Several museums in the various regions feature local aspects of the natural history of the floods.



Bellevue Erratic



Palouse Falls

Word Definitions:

Moraines – Is material left behind by a moving glacier. This material is usually soil and rock, just as rivers carry along all sorts of debris and silt that eventually builds up to form deltas. Glaciers transport all kinds of dirt and boulders that build up to form moraines.

Kolks - Is an underwater vortex created when rapidly rushing water passes an underwater obstacle in boundary areas of high shear. High-velocity gradients produce a violently rotating water column, similar to a tornado.

Coulee – In the northwestern United States, coulee is a large, steep-walled, trench-like trough, commonly spillways and flood channels incised into the basalt plateau.

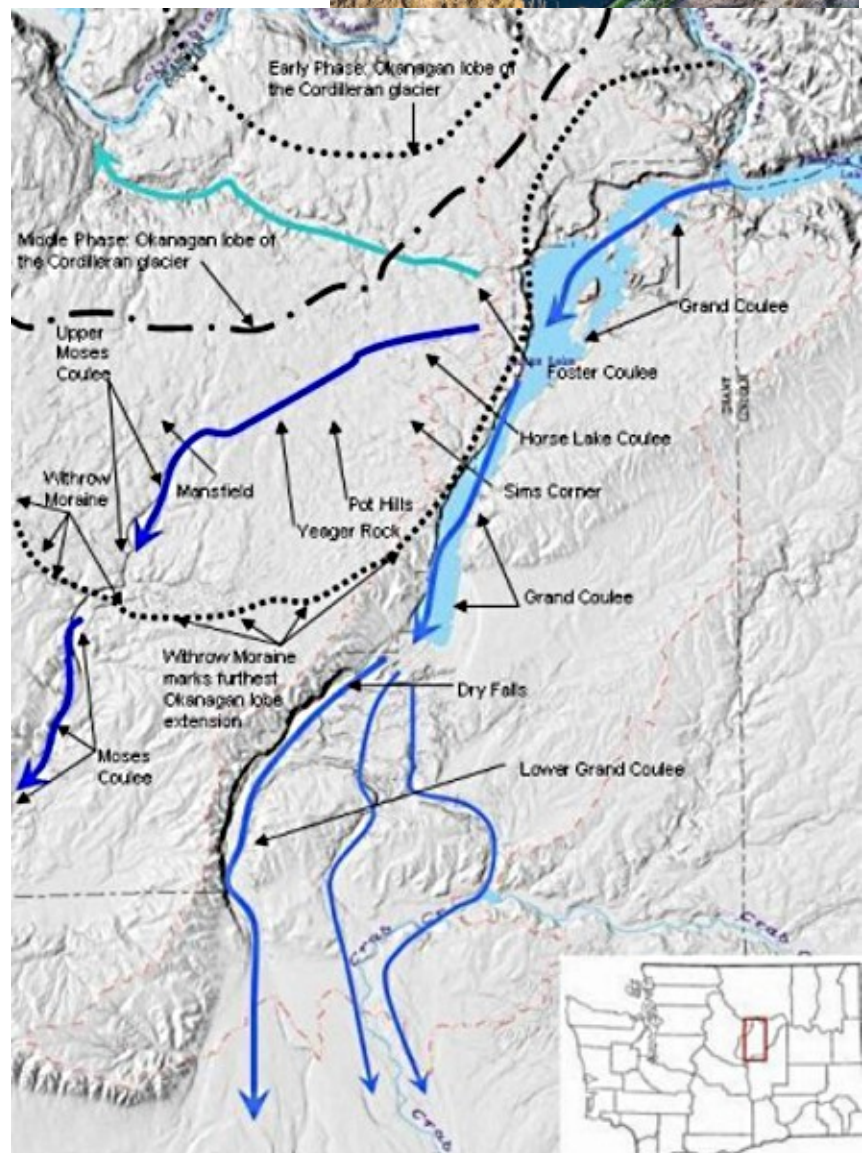
Loess - An unstratified deposit of silty or loamy material usually buff or yellowish-brown in color and is chiefly deposited by the wind. It is a sedimentary deposit composed mainly of silt-size grains loosely cemented by calcium carbonate.

Eskers – Are ridges made of sands and gravels, deposited by glacial meltwater flowing through tunnels within and underneath glaciers or through meltwater channels on top of glaciers. Over time, the channel or tunnel gets filled up with sediments.

Kames – Are a moundlike hill of poorly sorted drift, primarily sand and gravel, deposited at or near the terminus of a glacier. A kame may be produced as a delta of a meltwater stream or as an accumulation of debris let down onto the ground surface by the melting glacier.

Scablands - Refers to an area that has experienced fluvial erosion resulting in the loss of loess and other soils, leaving the land barren. River valleys formed by erosional downcutting of rivers create V-shaped valleys, while glaciers carve out U-shaped valleys.

Bibliography: Edited excerpts from Wikipedia, US National Park Service, Google Dictionary, Encyclopedia Britannica



Young Tumblers News

Sand Achieves A High Honor

Sand made it into the Toy Hall of Fame! Every September the National Toy Museum in Rochester, NY nominates 12 "toys" for entry into the National Toy Hall of Fame. In early November, they announced the three winners selected by all who voted. *and sand was one of them*, right alongside American Girls dolls and the board game Risk. I guess this means the sand collectors in our club are just kids at heart! Maybe this will encourage more of you to become afflicted with arenophilia!

According to the Toy Hall of Fame, sand was honored for its "opportunities for tactical, physical, cooperative, creative, and independent free play." The press release also noted that "children recognize sand as a creative material suitable for pouring, scooping, sieving, raking, and measuring." Heck, that is what I am doing regularly with all the sands I collect.

Christopher Bensch, the chief curator of the museum added, "although some playthings can only be found online or in certain stores, sand has a global reach that most toy manufacturers would envy. Sand has been a vehicle for play since prehistory, and anyone who has spent the day at the beach can understand the allure of this toy."

With the announcement sand became the 75th toy inducted into the Toy Hall of Fame! I guess we could all wonder, what took them so long!

from Wayne County Gem and Mineral Club News, 12/21

Here is the link to the actual entry on sand <https://www.museumofplay.org/toys/sand/>

Sand Painting is an ancient storytelling technique using different colored sands to create pictures, usually temporary, although these days some people may use fixatives to hold the sand in place, as well as artificially colored sand for a greater range of color.

Sand Words by Keith Alan Morgan

Things involving sand. Words can be found forward, backward, up, down and diagonal. The word Sand is not part of the search.

Beach	W	Y	H	C	Z	L	F	M	V	I	R
[Sand] Castle	I	D	C	A	S	T	L	E	O	H	M
Desert	T	E	F	P	X	A	Z	R	Q	R	A
[Sand] Dunes	C	S	S	A	L	G	R	U	O	H	N
Hourglass	N	E	E	I	J	I	Z	T	J	C	P
[Sand] Man	X	R	Q	N	V	Y	S	P	W	A	Y
[Sand] Painting	T	T	P	T	U	C	Q	L	A	E	B
Quick [sand]	B	G	D	I	N	D	P	U	O	B	D
[Sand] Sculpture	E	H	I	N	C	Y	X	C	I	V	Q
[Sand] Storm	A	V	W	G	J	T	N	S	K	C	U
	S	A	M	D	W	J	G	Z	M	A	K



Safety Matters: Safety in the New Year by Ellery Borow, AFMS Safety Chair

Safety guidelines, rules, parameters, restrictions, advisories and more--Oh My. What a lot of safety. What are all these safety documents? They are documents, the following of which are meant to keep people safe from harm. That is straight-forward, but how, where, and when do rules apply and how does one make those judgements? In a word (or three) - practice, judgement, and understanding.

A medical kit is an extremely helpful thing to have in an emergency. But a better use of the kit will be made when the user is familiar with the contents, how to use the items, notes expiration dates before needing the supplies in the kit, and has it available when needed. There are rules and guidelines for almost everything; however, the wise use of those rules often makes the difference of being safe or having problems.

Here are a few ideas worth considering:

- Have multiple people read and understand the guidelines
- Know where the guidelines apply and where they might not.
- Safely practice the guidelines.
- Get help or research areas where rules are unclear.
- Become knowledgeable where judgements apply, know the risks, and err on the side of safety.
- Make sure everyone knows the rules applicable to the task.
- Common sense goes a long way in being safe.

Here are a few good starting places for safety guides:

- Medical emergency kit safety booklets
- Equipment guides
- Personal protective gear instructions
- Hand / power tool maintenance recommendations
- Meeting place / show facility rules
- Mine, quarry, pit procedures and restrictions

Your safety matters. That is not a judgement. It is a rule.

from AFMS Newsletter, 3/21

Young Richard's Almanac by Dick Morgan

Manners matter!

Let's start 2022 with friendly greeting and a smile to friends and strangers as you meet them as it costs you nothing and it may brighten their day.

Have a happy new year!