

The CMS Tumbler

**April
2016**

This publication is an official bulletin of the Cascade Mineralogical Society Inc. (CMS).
(Previously known as the Boeing Employees' Mineralogical Society (BEMS))

Next Meeting:
April 14, 2016,
7:00 p.m.

**American Legion Hall
25406 97th PI S
Kent, WA**

The Program will be a talk on what tools you
need for rockhounding by Jim Cerenzie

The Show & Tell Theme is in honor of April
Fool's Day bring a rock or mineral that is often
sold as something else. Fool's Gold (Pyrite),
Amazonite (often sold as New Jade),
Magnasite (often sold as Turquoise), Howlite
(often dyed and sold as Turquoise), etc.

This month remember
to wish a
Happy Birthday to
Mark Hohn on April 17
and also remember
to wish a
Happy Anniversary to
Mark & Penny Hohn on April 17

There will be a club field trip
on April 30 near Enumclaw
for red & black agate

Except where otherwise noted, material from The Tumbler may be reprinted for non-commercial
purposes, provided that the author(s) and source are acknowledged.

For commercial use, the author(s) must be contacted for permission; if no contact information is
given, contact them via the editor.

Tips, suggestions, recipes and experiments printed in this newsletter are the experiences and/or
opinions of the individuals submitting them. We are not responsible for their authenticity, safety, or
reliability. Caution and safety should always be practiced when trying out any new idea.

When on field trips this organization uses CB Channel 7.

The monthly newsletter of the Cascade Mineralogical Society, Inc., Kent, Washington

CMS Club Address
Rich Russell
1 4431 SE 254th St.
Kent, WA 98042

Keith Alan Morgan, Editor

Postal, or Email, Exchange
Bulletins are welcome.
Email preferred.
morgangraphix@yahoo.com

Officers & Directors 2016

President Kat Koch
Vice President Diana Horsfall
Treasurer Richard Russell
Secretary Pete Williams
Director Roger Pullen
Director Mark Hohn
Past President Bob Pattie
Federation Representative Michael Blanton
Federation Representative Kat Koch
Mineral Council Bob Pattie
Mineral Council Jacquie Pattie
Refreshment Diana Horsfall
Membership
Health & Welfare Bev Williams
Library Bob Pattie
Video Library
Raffle/Display Stanley Loreen
Show & Tell Michael Blanton
Field Trip Tony Johnson
Tumbler Editor Keith Alan Morgan
Webmaster Keith Alan Morgan
South Sound Show
Events Coordinator
Public Relations Kat Koch
Club Historian
Donations Kat Koch
Shop Operations Bob Pattie
Open Shop
 Shop Instructors:
 Faceting
 Jewelry
 Lapidary Bob Pattie

2016 CMS Dues are \$30. Send or deliver dues to:
Richard Russell, 14431 SE 254th St., Kent, WA 98042 (or pay him at the meeting)

The object of the Society shall be to stimulate interest in the study of the earth sciences, lapidary arts and related subjects.

This Society is affiliated with the American Federation of Mineralogical Societies; the Northwest Federation of Mineralogical Societies; and the Washington State Mineral Council.

Every member of the club should be receiving a copy of the Northwest Newsletter. If you are not receiving a copy contact Mike Blanton

To get information to the Tumbler via the Internet send it to morgangraphix@yahoo.com Please put Tumbler and subject in the Subject Line. **The deadline is the 20th of each month.**

The CMS external website is <http://www.cascademineralogicalsociety.org>

April

Sun	Mon	Tue	Wed	Thur	Fri	Sat
April 1st is Politician Appreciation Day!					1	2
3	4	5	6	7	8	9
10	11 Board Meeting 7 pm	12	13	14 General Meeting 7 pm	15	16
17	18	19	20	21	22	23
24	25	26	27	28	29	30

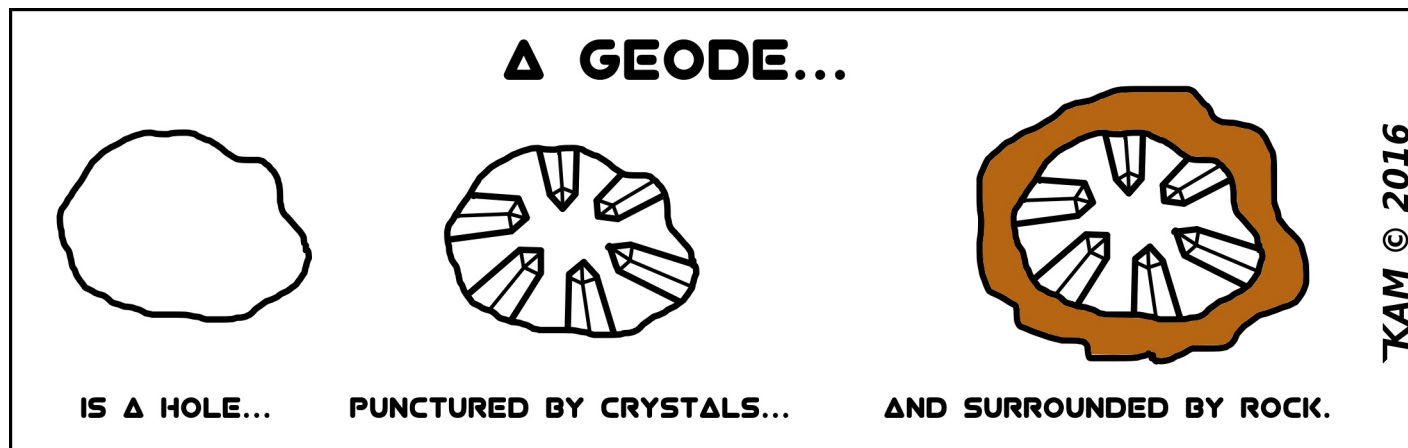
Lapidary Shop Hours:.....3rd Tuesday..... 10:30 am to 4:00 pm

Lapidary Shop Hours:.....4th Saturday..... 11:00 am to 5:00 pm

CMS Board Meeting:.....Monday before the General Meeting.....7:00 pm to 8:00 pm

CMS General Meeting:.....2nd Thursday.....7:00 pm to 9:00 pm

Club Field Trip:.....April 30



CMS Board Meeting Minutes March 7, 2016

by Pete Williams, 2016 Secretary

*Members Attending**President Kat Koch**Federation Mike Blanton**Treasurer Rich Russell**Director Roger Pullen**Secretary Pete Williams**Director Mark Hohn*

Meeting called to order at 7:00

We received a check from the South Sound Show account that was the seed money for a new show. This closes that account. Kat received confirmation that our club will be able to split time with the Puyallup club at the Puyallup Fair in September. Volunteers will get free admission and parking.

Mark has been working on designing a new look for the club's web site. Keith and Mark will work on the programming. Kat is looking for a less expensive site to host the club website. Kat has been attempting to contact Dennis English to obtain admin rights to the club's Facebook account. Rich will attempt also.

The club field trip to Salmon Creek in February was a big success with 15 people in attendance – about half from the Puyallup Club. The March field trip will be to old slope in Greenwater.

Kat purchased bingo equipment for the rock bingo program at the March meeting. Participants will pay \$1 each with children being free. Rich will contact Bob Wahlberg about reserving the Lake Wilderness Arboretum for the club's August picnic. Bob is also gathering all the documents from the previous South Sound Shows. Rich obtained a 17 minute DVD for a future club program on White Sands National Monument in New Mexico. He also reported 2015 financial results. The club had income of \$4064 and expenses of \$3767.

The next meeting will be April 11 at Panera Bread in Kent.

Meeting adjourned at 7:48.

CMS General Meeting Minutes March 10, 2016

by Pete Williams, 2016 Secretary

Meeting called to order at 7:11. Minutes were approved as written.

Tumbler Editors and Webmasters Report: Keith had to use a prior format for the March issue so it looked a little different than the previous month.

Treasurer's Report: Rich reported the financial results for 2015. Expenses were \$3767 with the biggest expense being for storage at \$2256. This will be higher in 2016. If anyone knows where to find a less expensive 10x20 facility let Rich or one of the board members know. Income was \$4064 with the biggest contributors being the raffle/auctions at \$1229 and Equipment sales of \$1784.

Field Trip Report: The club field trip in February to Salmon Creek was a success with 15 people attending. The weather did clear later in the day, but the water was high and the bridge was washed out. The March trip to old slope Greenwater will be on the 26th. It will be at 2600' elevation and will be muddy.

Federation Report: The mid-year show will be in April in Kennewick.

Mineral Council: At the last meeting a discussion was held on better ways to handle the expensive \$1000 per year lease for the Walker Valley site. Groups of 10 or more people can request the gate be opened. Parking requires a Discovery Pass. Let Bob know if you have interest in any particular field trip.

Old Business: The Opal Club is completely dissolved.

New Business: Mark will be working on designing and programming the club web site. The theme for next month will be rocks mistaken for something else.

Program: The program was a fun night of rock bingo with some 75 slabs being awarded as prizes. Two door prizes were also awarded.

Meeting Adjourned.

A Note from the President's Desk . . .

by Kat Koch, 2016 CMS President

Our first "Rock Bingo" night went great! Everyone went home with some nice new slabs. As we were wrapping things up, it was the general consensus that we should do this once a year.

Along with our regular program we will also be showing off our new website and revamped Facebook page at our April meeting. Our own Club Member Mark Hohn is right now hard-at-work on these sites.

I am still looking for someone to be our Club Historian. I would sure appreciate someone volunteering to fulfill this position. We have been a Club for over 67 years and I feel it's very important not to lose our Club history.

I want to thank everyone that turned out for our March field trip. It has been a while since our Club has had planned monthly field trips. Tony puts a lot of effort into doing these trips for us and I am happy to hear we are showing our appreciation by taking part in them.

CMS is partnering with the Puyallup Club to have a booth at the Puyallup Fall Fair. We will be asking for volunteers to help man the booth. This can be a volunteer opportunity for just you, husband and wife or families. You will get free admission and parking. So plan ahead to help us out sometime between September 2nd through September 25th. There will be a sign-up sheet as we get closer to September.

If you have an unusual hobby with rocks please email or catch me at the meeting to let me know what it is. Sample of some rock hobbies: intarsia, jewelery, cabbings, replicating food or bird houses in rock or other objects, faceting, flint knapping, etc.

I am trying to do some creative thinking and to come up with new and interesting and fun things to do at our General Meetings. If anyone has any ideas please send me an email or catch me at the meeting.

STEM Fair at PLU March 19, 2016 by Dick Morgan

With my case of specimens loaded up we departed for PLU to give another presentation for the attendees of the finals for the STEM Fair for the local schools. This year several of the persons that had been there in prior years stopped by with new questions, in fact this year my presentation mostly consisted of answering questions. Included in this year's exhibits I had some rough gem stones to show what they start out as.

One young lady stopped by and asked about gem stones and looked at all the pieces of rough material including the man made, she seemed very interested in what kind of a future existed in the gem field, so I explained about geology and gemologists. I also explained that there were places on the internet that she could get more information about these fields. She made my day by writing a thank you note and gave it to me as she left.

While explaining to her other people were listening and looking at the rough and also asking questions.

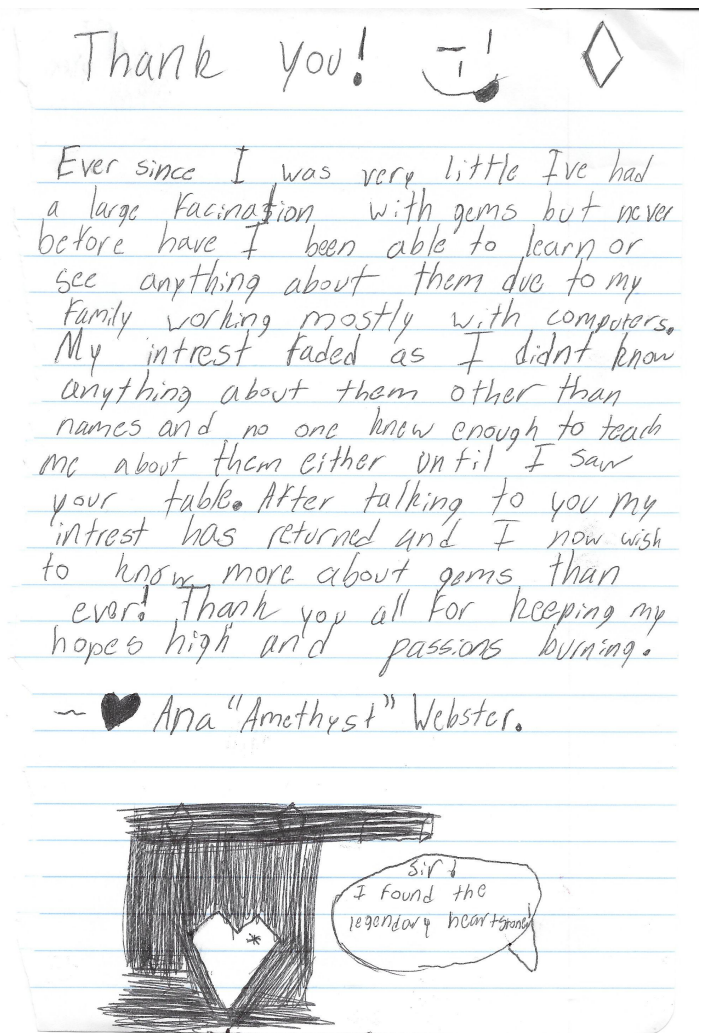
This year another member of our club, Andrew Lengenfelder was there to display and explain his specimens.

Made for a very enjoyable day, and as usual someone showed up as we were packing up and wanted to see some of my material, this year it was one of the judges so we took time to show her and explain what she was interested in. I was asked if we would return next year.

Young Richard's Almanac by Dick Morgan

A word of thanks after helping someone goes a long way to make life much more pleasant.

Always say thank you when you have the chance because circumstances may not allow you to say it later.

**Science Fair at PLU** by Andy Lengenfelder

Saturday March 19th, four of us from CMS went to the South Sound Regional Science and Engineering Fair at Pacific Lutheran University in Lakewood. Kids from grades K-8 participated with science and engineering exhibits that they had designed and made. The variety and sophistication were amazing. I got a chance to wander among the exhibits and talk with the kids. They are much brighter than I was at their ages. And they all seemed to have one or both parents with them, good to see the younger engaged in scientific explorations, with parental support.

We, CMS, were one of several educational groups set up with tables around the outside of the gym, and were visited by students and parents alike during the lulls in the program. The Morgans' polished Malachite and polished Star Garnets were clear winners in the attract a crowd category. The mammoth fossils were also a big hit.

I had a chance to visit several of the other outside groups including the Tacoma Astronomical Society. That group included a retired astronomer that teaches night photography and an evening sky program in Glacier National Park in the summer. He showed me some great night sky pictures of phenomenon I've never seen before.

Also with us were two ladies from the Museum of Glass that demonstrated the effects of light refraction through various shaped lenses. And how light travels through fiber optics. Another exhibit was a teacher demonstrating using Play-Doh as an electrical conductor. Who knew!

I had a great time and am looking forward to bringing something like this to our local grade school where the wife and I are involved with a reading program for 2nd graders. The 2nd graders have expressed an interest in rocks, so I brought some of mine to show them.

The CMS table was well received by the staff at the fair and I am hoping to be able to help out another time.



Club Field Trip to the Greenwater River 03-26-2016 by Jim Cerenzie

After getting off work Friday, the clouds cleared and the sun shone. This after a whole week of cloudy and rainy weather. Will the next day's rock hunt to the Greenwater be gifted with sun? I could only hope.

So after getting home, with excited anticipation, I got some of our rockhounding gear together and loaded it up. I also looked up the geological Snoqualmie quadrangle map and noticed the search area is in what's known as the Fifes Peak Formation; the leftover 21-22 million year old remnants of long ago eroded volcanoes. A perfect prerequisite for finding various quartz based minerals.

Saturday we drove to the Enumclaw Ranger Station and met up with our club and the guests and members of some other local rock clubs. It was a pretty good showing with approximately 30-40 people. Tony Johnson was our host and showed some samples of the material we'd be searching for. The plan was to explore a spot named "The Old Slide" for jasper, agate, and petrified wood.



Tony explaining where we'd rendezvous and the plan of the day



The beginning of FS Road 70. 14 vehicles ready to go!

So at 9AM sharp, we left the ranger station and headed east on Hwy 410 and then turned left on FS Road 70. We briefly stopped here and made sure every one was gathered for the car convoy that headed up to "the slide". We then drove another eight miles up FS 70 and parked for the short hike back into the woods to "the slide". Because of the fresh snow melt, the hike was muddy and we had to traverse some runoff streams, so it was a good idea that many of us had boots.

And then at the end of the trail, there it was. "The Old Slide", a large land slide on the side of a steep hill that exposed the mud and clay in an old alluvial formation, which contained the material we'd be searching for. Some people chose to search through the lower talus and some people chose to search up high and dig in the freshly exposed clay. Me, Aidan, and Rich decided on the later.



The trailhead leading back to "The Old Slide"



"The Old Slide". Notice the freshly fallen evergreen trees

Our decision to dig up high was not easy because of the steepness and sticky, boot sucking mud. But it was well worth it because we were rewarded with some nice material and a killer view of the surrounding mountains!



The view from the top



A teenaged rock hounder digging out a HUGE agate next to us



Rich finds one



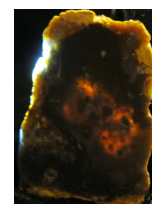
And pulls it out!



Old rock hound giving some pointers to a young rock hound

After digging in the "old slide" area, we packed up and headed out. We all piled back into our vehicles and Tony took us another 4 miles up FS 70 to another area in which we could find seam agate. It was a large sloped road cut where you could search the loose soil or hike up to the top of the Andesite cliff and dig in the hard rock for the agate. We chose to scramble up to near the base of the rock cliff and dig in the soft soil for loose seam agate that had eroded down from higher above. We primarily found lots of tumbling material and a few larger pieces that will go in the saw.

So as it turned out, we were not only gifted with a sunny and nice day up in the mountains, but also some very nice material to take home. Thank you Tony Johnson for hosting our trip!



Field Trips

The club or clubs sponsoring the field trips are shown in *italics*. When known I have listed a phone number and contact person for each sponsoring club below the listed trips. If you are not a member of the sponsoring club, you should phone and ask permission to go on their field trip.

Some trips have fees to non club members, so they can be a day member, and be covered under club insurance. The usual fee is \$.50 a day.

Information from the Washington State Mineral Council webpage (<http://www.mineralcouncil.org>).

April 16-17

All Rockhounds PowWow Club - Saddle Mountain – Meet at 8:00 am at the Boat Launch – Petrified Wood – Bring digging & hard rock tools
Larry Vess - vessel3755@gmail.com (253) 473-3908

April 30

Cascade Mineralogical Society – FR-70, meet at the Enumclaw ranger station, leave at 9:00 am – Red & black agates
Tony Johnson – (253) 863-9238

Shows

April 2 & 3

Bedrock Prospectors Club, *Gold, Gem, and Treasure Show*
Thurston County Fairgrounds, Lacey, WA

April 8 - 10: Friday & Saturday 10 am – 6 pm; Sunday 10 am – 4 pm

Yakima Rock & Mineral Club, *Rockin' Your World*
Central Washington State Fair Ground, Modern Living Building, 1301 South Fair Avenue, Yakima, WA

April 16 & 17: Saturday 10 am – 5 pm; Sunday 10 am - 4 pm

Lakeside Gem and Mineral Club
Benton County Fairgrounds, 1500 South Oak, Kennewick WA

April 22 – 24: Friday & Saturday 10 am – 5 pm; Sunday 10 am – 4 pm

Mt Hood Rock Club
W.P. Jackson Armory, 6255 NE Cornfoot Road, Portland, Oregon

April 23 & 24: Saturday & Sunday 10 am – 5 pm

West Seattle Rock Club
Alki Masonic Temple, 4736 40th Avenue SW, Seattle, WA

April 30 - May 1: Saturday 10 am – 6 pm; Sunday 10 am – 5 pm

Everett Rock and Gem Club
Everett Community College, Walt Price Student Fitness Center, 2206 Tower Street, Everett, WA

Q: Did you hear the one about the geologist? A: He took his wife for granite so she left him.

Q: What did the boy volcano say to the girl volcano? A: I Lava You!

Q: Why did the geologist take his girlfriend to the quarry? A: He wanted to get a little boulder.

Q: If H₂O is the formula for water, what is the formula for ice? A: H₂O cubed.

Q: Did you hear about the geologist who was reading a book about Helium? A: He just couldn't put it down.

Q: What do you call a periodic table with gold missing? A: "Au revoir".

Q: What element is derived from a Norse god? A: Thorium.

Q: What do you do with a dead geologists? A: Barium.

Q: Why shouldn't you let a geologist drive your car? A: Because they get hammered and stoned.

Q: What do you call a can of pop found in a conglomerate? A: Coca-Cola Clastic

Q: What do geologists call a benzene ring with iron atoms replacing the carbon atoms? A: A ferrous wheel.

Q: What fruit contains Barium and double Sodium? A: BaNaNa!

Q: Why wasn't the geologist hungry? A: He lost his apatite.

Q: Why shouldn't you lend a geologist money? A: They consider a million years ago to be Recent.

Watson: Holmes! What kind of rock is this! Holmes: Sedimentary, my dear Watson.

via Gem & Mineral Journal, 12/15; from <http://www.jokes4us.com/miscellaneousjokes/schooljokes/geologyjokes.html>